

Accessories



download data sheet on your smart phone with a QR-Code scanner app.

PUR cable with straight screw type M8 connector

3-pin:	l=2m	Type KAB 2K3VGPUR
	l=5m	Type KAB 5K3VGPUR
4-pin:	l=2m	Type KAB 2K4VGPUR
	l=5m	Type KAB 5K4VGPUR



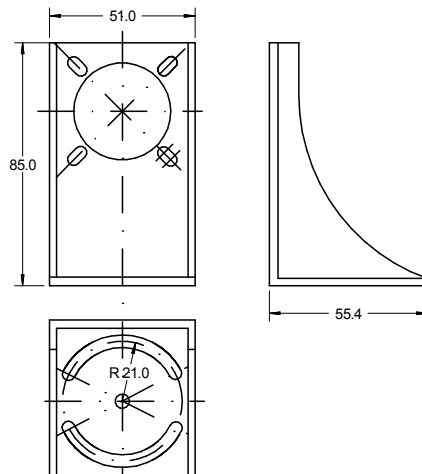
Mounting bracket made of glassfibre reinforced Polyamide

For mounting of ultrasonic sensors UP and UPK series.
Type UPM



PUR cable with 90° screw type M8 connector

3-pin:	l=2m	Type KAB 2K3VWPUR
	l=5m	Type KAB 5K3VWPUR
4-pin:	l=2m	Type KAB 2K4VWPUR
	l=5m	Type KAB 5K4VWPUR



PVC cable with straight screw type M12 connector

4-pin/3-wire:	l=2m	Type KAB 2L3VGPVC
---------------	------	-------------------

PUR cable with straight screw type M12 connector

4-pin/3-wire	l=2m	Typ KAB 2L3VGPUR
4-pin/4-wire	l=2m	Typ KAB 2L4VGPUR

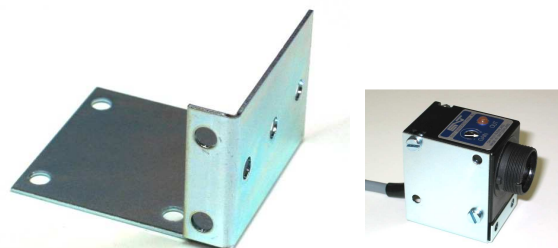
Teach-In box for UPS series

The Teach-In Box has two 2m long cables for connection between sensor (M12, f) and sensor cable (M12, m). Thus it is put into the actual sensor cabling, and it can be removed after the teach-in procedure. The teach-in happens by a quick touch of the switch either to the left or right.



Metal mounting bracket

For mounting of optical sensors OPE series.
Type OPM06, incl. 2 screws



www.sntag.ch